

KEY MAP
N.T.S.

A PLANNED UNIT DEVELOPMENT VALENCIA LAKES - PLAT ONE

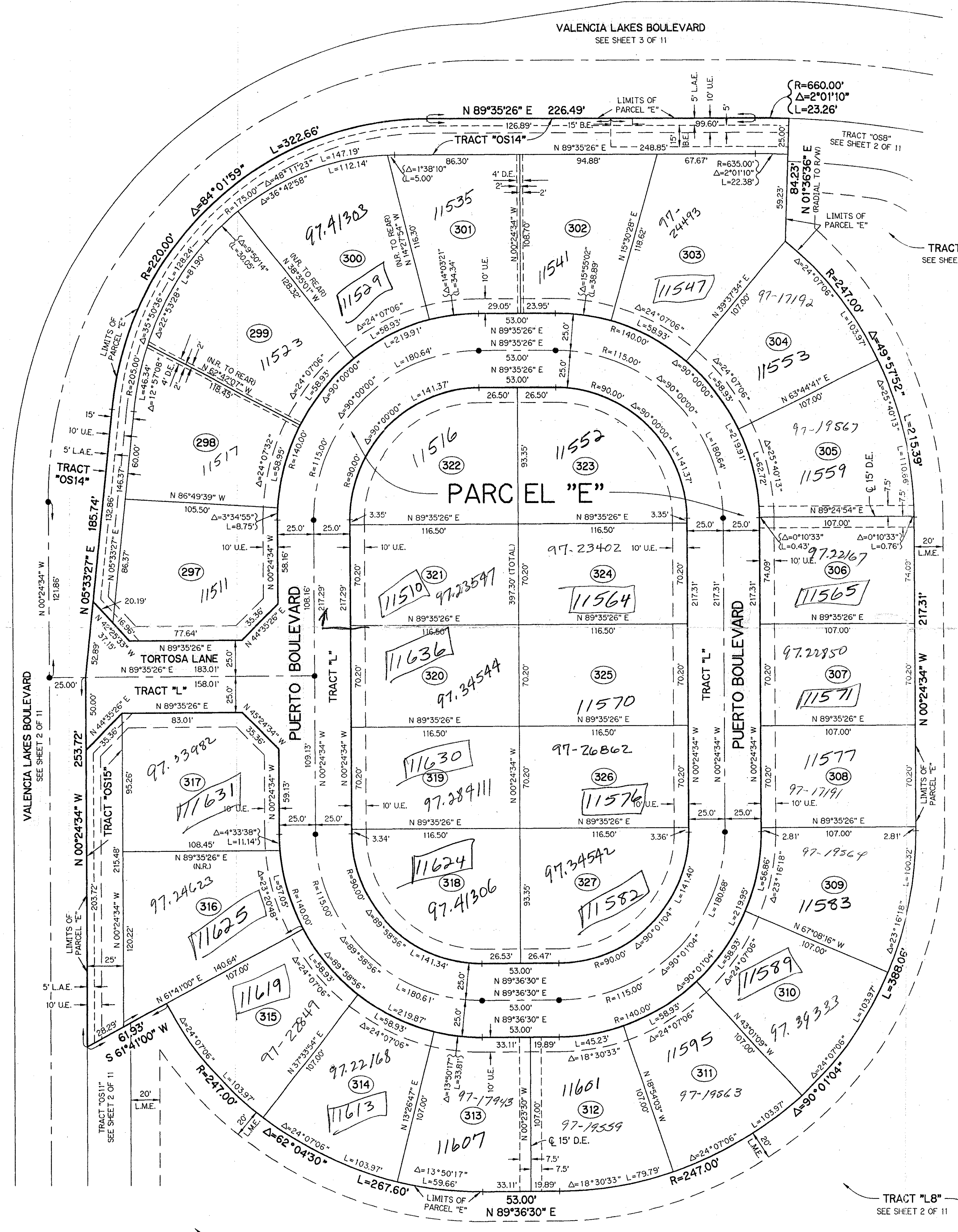
BEING A REPLAT OF ALL OF TRACTS 42, 43, 44, 45, 46, 47, 50, 51, 52, 53, 54, 55, 74, 75, 76, 77, 78, AND 79 AND A PORTION OF TRACTS 41, 48, 49, 56, 73, 80, 81, 82, 83, 84, 85, 86, 87, AND 88 AND ASSOCIATED ABANDONED RIGHT-OF-WAY ALL IN BLOCK 58 ACCORDING TO THE PLAT OF PALM BEACH FARMS COMPANY PLAT NO. 3, AS RECORDED IN PLAT BOOK 2, PAGES 45 THROUGH 54, INCLUSIVE, OF THE PUBLIC RECORDS OF PALM BEACH COUNTY, FLORIDA. LYING IN SECTION 33, TOWNSHIP 45 SOUTH, RANGE 42 EAST.

SHEET 11 OF 11 FEBRUARY, 1996

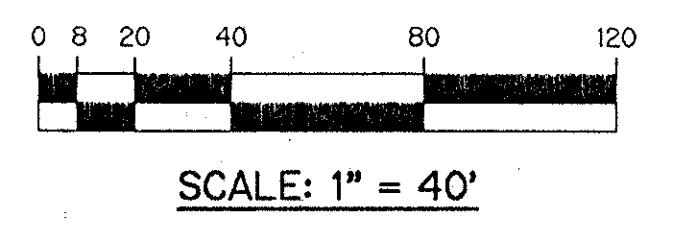
- LEGEND:**
- - PERMANENT REFERENCE MONUMENT, PSM #4213
 - - PERMANENT CONTROL POINT, PSM #4213
 - △ - DELTA ANGLE
 - B.E. - BUFFER EASEMENT
 - C - CENTERLINE
 - D.B. - DEED BOOK
 - D.E. - DRAINAGE EASEMENT
 - L - ARC LENGTH
 - L.A.E. - LIMITED ACCESS EASEMENT
 - L.M.A.E. - LAKE MAINTENANCE ACCESS EASEMENT
 - L.M.E. - LAKE MAINTENANCE EASEMENT
 - L.W.D.D. - LAKE WORTH DRAINAGE DISTRICT
 - N.R. - NOT RADIAL
 - N.T.S. - NOT TO SCALE
 - O.E. - OVERHANG EASEMENT
 - O.R.B. - OFFICIAL RECORD BOOK
 - P.B. - PLAT BOOK
 - P.B.F.C. - PALM BEACH FARMS COMPANY PLAT NO. 3 (P.B. 2, PGS. 45-54)
 - P.G.S. - PAGES
 - P.S.M. - PROFESSIONAL SURVEYOR AND MAPPER
 - R - RADIUS
 - R/W - RIGHT-OF-WAY
 - S.T. - SURVEY TIE
 - U.E. - UTILITY EASEMENT
 - N 737648.0171 E 905258.2326 - DENOTES STATE PLANE COORDINATES

SUBDIVISION *
BOOK 78
PAGE 23
FLOOD MAP #20114
ZONING PUD
QUAD * 50
SE 45-40
PUD NAME Valenciac Lakes

Revised
11/2/96



Plat 95/40
No schools
Restrictive Covenant
Roads 1320' - BEFORE 12/1/97
5/3/3K
Roads 1452' AFTER 12/1/97



78-23

THIS INSTRUMENT PREPARED BY
PERRY C. WHITE, P.S.M. 4213, STATE OF FLORIDA
LAWSON, NOBLE AND WEBB, INC.
ENGINEERS PLANNERS SURVEYORS
WEST PALM BEACH, FLORIDA

0662-001